

Features:

- Five belt widths available
- Ovens are fully modular enabling the exact dryer length to be chosen to suit all curing requirements and be expanded at a later date.
- Optional gas flow indicator enables running costs to be shown
- Triple insulation with air curtain for the coolest exterior skin ever
- Air intake from both sides of oven giving the best heat distribution



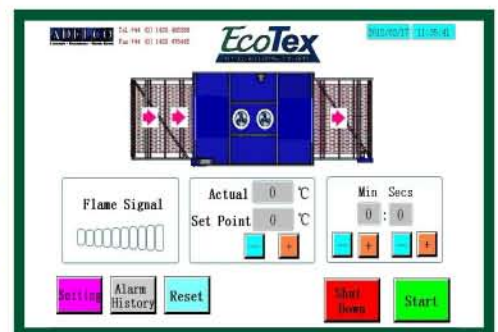
- Reduced energy consumption for the lowest running costs
- Integral exhaust connected from top of dryer with easily adjustable exhaust outlet valve
- Lint filter removable from either side of dryer (No replacement filters required)
- Removable end panels for easy cleaning access

Ecotex gas dryer operating costs chart

BELT WIDTH	OVEN LENGTH	ADELCO AVERAGE GAS CONSUMPTION Kwh	ADELCO AVERAGE ELECTRICAL CONSUMPTION Kwh
75CM	2 METERS	14	1.7
	3 METERS	15	2
100CM	2 METERS	15	1.8
	3 METERS	16.5	2
	4 METERS	18	2.2
	5 METERS	19.5	2.4
120CM	6 METERS	26	3.6
	3 METERS	18	2.1
	4 METERS	19.5	2.3
150CM	5 METERS	21	2.5
	6 METERS	27	3.8
	3 METERS	20	2.3
180CM	4 METERS	21	2.5
	5 METERS	23.5	2.7
	6 METERS	37	4
180CM	3 METERS	23.5	2.4
	4 METERS	26	2.6
	5 METERS	29	2.8
	6 METERS	44	4.2

Adelco figures taken from consumption tests, averaged per hour at 170 degrees, with exhaust closed. Consumption figures can change according to local environment, production throughput, ink and product types. Adelco reserve the right to revise or review these figures as required.

TOUCH SCREEN CONTROL PANEL



- Touch Panel control Screen features include:**
- Belt speed adjustment. Enter the time required in the oven in mins and secs and watch the belt speed change automatically!
 - Digital temperature control
 - Alarm history shows any safety or temperature fluctuation alarms with date and time record
 - On screen flame signal