

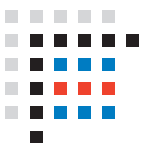


SEFAR® PME

swiss 
mesh
technology

New, specially developed for hi-tech applications

**Precision mesh for high-end industrial
screen printing**



SEFAR

SEFAR® PME (Precision MESH)

is the most accurate mesh available for high-end screen printing applications

Today's buyers and consumers place ever increasing demands on a product's performance and quality. They are not prepared to compromise. That is why the individual requirements for high-end screen printing are rising in the manufacturing sector, whether in the automobile and machinery industry, in the solar energy sector, in the production of mobile communication components or in consumer goods, such as entertainment equipment or watches.

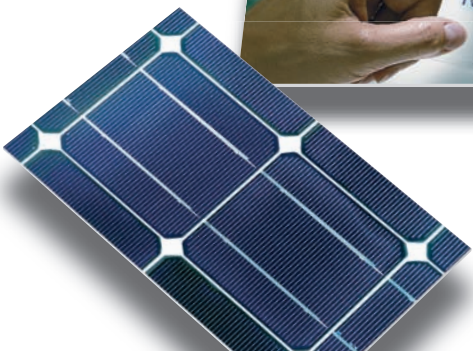
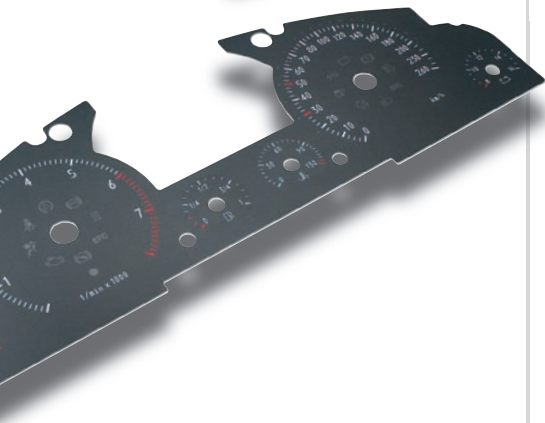
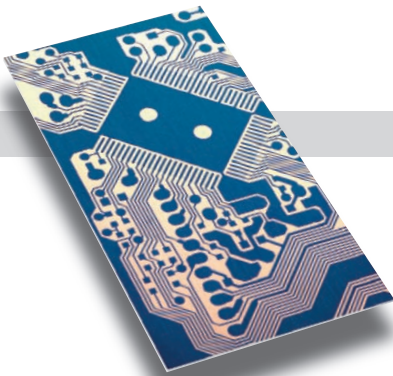
This also explains why industrial screen printers are no longer looking for just a «mesh supplier». These days, buyers prefer to have a partner – such as Sefar – who can cater for the special needs of the business, in particular the manufacturing parameters of their application. Armed with this information, Sefar then produces a customized screen printing fabric that precisely fits the particular conditions and machinery.

Our new fabric, **SEFAR® PME**, plus the personal advice offered by our applications experts is the perfect combination to meet the needs of leading industrial clients throughout the world.



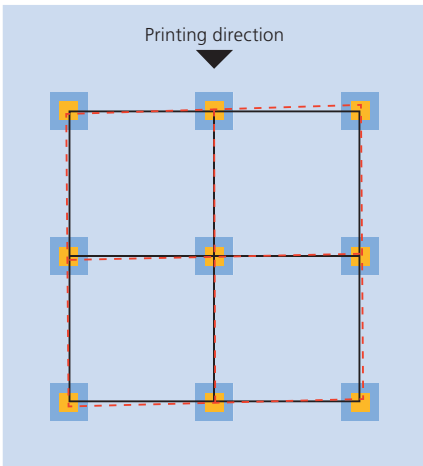
SEFAR® PME has been specially developed for the tough demands of industry. The unique properties of this superb new fabric are impressive:

- 1. SEFAR® PME is very fast at constantly high tensions = shorter production times!**
- 2. SEFAR® PME exhibits minimal loss of tension = increased stencil life!**
- 3. SEFAR® PME provides the greatest possible dimensional stability = best quality printing results!**



Setting the pace in the market

SEFAR® PME provides better dimensional stability

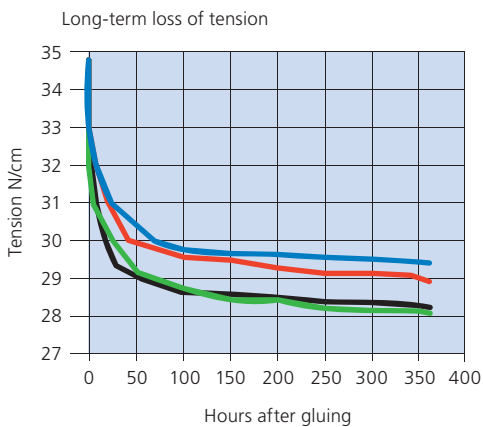


- Higher tensile strength during stretching
- Higher tensions possible
- Reduces snap-off distance and squeegee pressure
- More precise image areas
- Extremely high dimensional stability, giving longer runs and better print quality

SEFAR® PME precision screen printing fabric

- Woven with a special, high module polyester yarn, guaranteeing a balance in warp and weft
- Designed for short exposure times
- Available in widths to suit the customer or standard widths of 115 cm, 142 cm and 158 cm
- Available in white and yellow
- Available in lengths to suit the customer or Sefar standard roll lengths

SEFAR® PME benefits from lower loss of tension

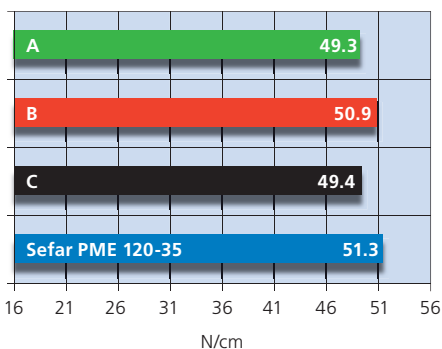


- Lower loss of tension after stretching
- Ready to use in less time, as it can be brought up to the required tension more quickly
- Consistent, even, high tension during printing
- Higher dimensional stability
- Longer stencil life, offering substantial cost savings

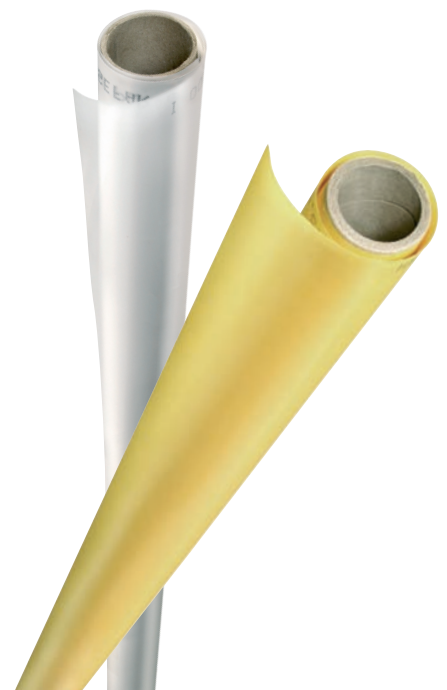
«The first precision screen printing mesh on the market to consistently meet the industry's demand for top class printing.»

SEFAR® PME exhibits higher tensile strength

Max. tension at break, two-dimensional 82 x 82 cm



- When compared to competitor's material, SEFAR® PME exhibits superior performance figures, such as tensile strength



**Sefar: a strong partner
that strengthens your customer
relations.**

www.sefar.com
printing@sefar.com

Headquarters:
Sefar AG
Printing Division
P.O.Box
CH-9425 Thal
Switzerland
Phone +41 71 886 32 32
Fax +41 71 886 35 91

Sefar Printing Solutions Inc.
120 Mount Holly By-Pass
PO Box 679
Lumberton, New Jersey 08048
USA
Phone (609) 613-5000
Fax (609) 267-1750
US only (800) 424-1401

Sefar Asia Pacific Co., Ltd.
SCB Park Plaza West, Tower II, 3F
18 Ratchadaphisek Road, Chatuchak
Bangkok 10900
Thailand
Phone +66 2 937 5624
Fax +66 2 937 5647

Sefar Printing Solutions
(Shanghai) Co., Ltd.
Building J, 1688 Zhuanxing Road
Xinzhuang Industrial Park
Shanghai 201108
China
Phone +86 21 6442 6800
Fax +86 21 6442 6866

Sefar Printing Solutions Co. Ltd.
7F Ohgimachi Matsushima Building
3-13, Suehiro-cho, Kita-ku
Osaka, 530-0053
Japan
Phone +81 6 4709 1070
Fax +81 6 4709 1071



As a **technology partner**, Sefar provides you with exclusive access to the latest findings and scientific/technological data that are constantly emerging as the result of our research and development.



As a professional application **technology partner**, Sefar offers you all-round advice and experience – at your premises, through individual training or at one of our STCs (Sefar Technical Centers).



Sefar is your technically expert **problem-solver** – always on hand, everywhere, with helpful information and practical tips.



Your **market partner** with a global presence. – Sefar operates on every continent, in over 100 countries, offering its customers a worldwide network of subsidiaries (with their own stencil production), sales companies and selected sales partners.



With Sefar AG, you're backing the dynamic **market leader** for innovative and technically perfect industrial screenprinting solutions.